



This quarterly e-news is a new initiative to better connect with those exercising leadership in the Archdiocese.

You will receive **links to resources** that may be useful in the many and varied ministries throughout the diocese.

Be kept updated on **Cardinal John Dews priorities**.

Informed of **workshops** that are on so you may factor them into your planning.

All feedback from parishes and individuals is welcome. Let us know what would be helpful and we will do our best.

Will you come with me?

In 2005 when Archbishop John asked us to come with him into unchartered territory we embarked on a mystery tour. Back in 2005 he knew he couldn't go solo and said, *'You may be wondering what shape the Archdiocese will have under my leadership as your bishop. Whatever its shape I want us all to have a part in its making. That will mean you and I working together to explore and map a way ahead. ... Come with me ... with open hearts, open minds and open ears. Trust me and trust one another. We have nothing to be afraid of.'*

Twelve years later the way ahead seems a little clearer. There was

a synod in 2006. Most parishes have amalgamated and people have responded generously, learning to trust each other more and communicate better. We understand that Jesus works through us. We all have a part to play.



On 08 December Cardinal John convoked another synod to take place September 15 - 17 2017. Once again we are being invited to journey together, *'The 2017 synod is a unique and timely opportunity*

for us to reflect on how we can be a Church that is at the service of the world around us'.

There will be a diocesan wide participation process beginning on 07 May and this will be a major focus leading up to the synod and provide a platform for pastoral planning into the future.

In the days and weeks ahead be alert to opportunities to engage in the participation process and invite others to do the same.

'We remember the past with gratitude, live the present with enthusiasm and look forward to the future with confidence' (Pope John Paul II from *Novo Millennio Ineunte* #1).

Mary-Ann Greaney

We have crossed the threshold and found the Lord already there ahead of us, beckoning us on.

We can journey with confidence.

(Archbishop John Dew, 2006)





Who do I call?

From time to time you may want to contact someone at the Archdiocesan office. Where do you go for information?

Who does what?

Paul Bayliss

04 496 1788



Archdiocesan General Manager

p.bayliss@wn.catholic.org.nz

Help with: Parish financial matters, property approvals, insurance issues, human resource matters - or connecting you to members of the team that are better able to help.

Chris Duthie-Jung

04 496 1759



Family and Young Church Ministries

c.duthie-jung@wn.catholic.org.nz

Young Church
Family Ministry
Adult Education
Sacraments of Initiation
Archdiocesan Complaints

Catherine Gibbs

04 496 5184



Wellington Site Coordinator, The Catholic Institute

c.gibbs@tci.ac.nz

Information about TCI courses
Guidelines for TCI qualifications
Lecturer
On-line tutor
Catholic Schools Education Services liaison

Joanne Gomez

04 496 1719



Marriage Programmes Coordinator

marriage@wn.catholic.org.nz

Pre-Marriage Preparation
Marriage Ministry Programmes
Training for Marriage Ministries

Jenny Gordon

04 496 1735



Vicar for Education

j.gordon@wn.catholic.org.nz

Catholic schools Proprietor
Catholic character Advice and support
Principals Board of Trustees
Proprietors appointees
Bishops agent
Preference Certificates
Statutory requirements

Lesley Hooper

04 385 8642



Catholic Social Services

l.hooper@wn-catholicsocialservices.org.nz

Refugee and Migrant Family support
Counselling
Police Vetting
Working with Volunteers Policies
Justice and Peace
Seasons for Growth
Hospital and Prison Chaplaincy

Danny Karatea-Goddard

04 496 1755



Māori Pastoral Care
Kaupapa Katorika
Māori
Advisor to the New Zealand Catholic Bishops Secretariat

Tūranga Māori Advisor

d.karatea-goddard@wn.catholic.org.nz

Angela Kelly-Smith

04 496 1758



Assistance with financial reporting
Charities Services
IRD issues
Xero support
Clergy stipends
Presbytery expenses
Parish levies
Parish norms
School attendance dues
School property matters

Finance Director

a.kelly-smith@wn.catholic.org.nz

Lorraine McArthur

04 496 1796



Stewardship Archdiocesan Pastoral Council.
Seasons for Growth License Council.

Projects Assistant to Archbishop

l.mcarthur@wn.catholic.org.nz

Joan McFetridge

07 575 2501



For those who think they have a call to formal ministry in the Archdiocese of Wellington - Launch Out is an integrated, formal programme of prayer, academic study, and pastoral practice.

Launch Out Formator Manager

j.mcfetridge@wn.catholic.org.nz

Annette Scullion

Editor, *Wel-Com* Communication Adviser

WelCom

04 496 1712

wel-com@wn.catholic.org.nz

Wel-Com deadlines, advertising, story, and photographic criteria may be found on the inside back cover of every *Wel-Com* publication.

Mika Teofilo

04 496 1707



Co-ordinates and organises Samoan Chaplaincy, Masses, retreats, programmes, and activities.

Samoan Chaplaincy Lay Pastoral Leader

m.teofilo@wn.catholic.org.nz

Leadership can be exercised in many ways and at many levels. It may be leading a one off project, longer term leadership in an area needing specialist skills, or participation in a leadership team. Whatever form leadership takes and for however long, at its heart is always service.

Synod Participation Document 2017

Websites you may find helpful

Just click on the picture to take you to the website



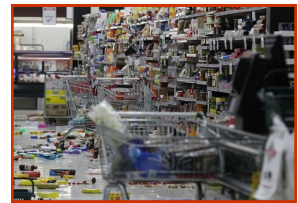
Pastoral Council Mandate

The Parish Council Mandate is a template that may be useful especially for amalgamated parishes that have come from different styles of exercising leadership. Feel free to ignore it or tailor it to suit your needs.



Copyright Information

Copyright compliance is an important issue for parishes today. Find out about the new Regional License that took effect from 1 March 2017. There is a copyright administrator in each parish.



Parish Emergency Response

Here is a very useful resource which parishes may wish to adopt that gives clarity about steps to be taken in an emergency - like the recent Kaikoura earthquake followed by Wellington flooding.



Parish Leadership Ministry Vicariate

Mary-Ann Greaney

04 496 1784



Leader

m.greaney@wn.catholic.org.nz

- ◆ In collaboration with others provides formation and support for parish leadership - including priests, lay pastoral leaders, pastoral councils, parish secretaries/administrators, and those involved in liturgical ministries.
- ◆ Parishes are kept updated on archdiocesan priorities.

Debbie Matheson

04 496 1706



Consultant

d.matheson@wn.catholic.org.nz

- ◆ Help embed and bring to life Cardinal John Dew's vision of having collaborative leadership teams of priests and lay pastoral leaders ministering together.



Mary-Ann and Debbie are easiest to contact by e-mail.

