



# **Directory of prayer and scripture groups in the Archdiocese of Wellington**



## Adoration of the Blessed Sacrament / Holy Hour

- \* **Cathedral of the Sacred Heart, Thorndon**  
Holy Hour 4th Tuesday of the month, 7.30pm  
1/2 hour in the Chapel, Thursday/Friday, 7.30am  
Contact parish office: 0-4-496 1700
- \* **Holy Family Parish, Nelson**  
Holy Hour, St Mary's, Nelson  
Holy Hour, St Francis of Assisi, Stoke  
Contact parish office: 0-3-539 1251
- \* **Holy Spirit Parish (Te Wairua Tapu), Lower Hutt**  
Contact parish office: 0-4-971 7885
- \* **Holy Trinity Parish, Wellington East**  
St Patrick's Kilbirnie, Tuesday, 10-11am/Saturday 11.30am-1pm  
Contact parish office: 0-4-388 6953
- \* **Catholic Parish of Otari,**  
St Teresa's Karori, 1st Friday after 9.30am Mass
- \* **Our Lady of the Bays Parish, Tasman District**  
Contact: Joan O'Neil 0-3-542 3707
- \* **Our Lady of the Valleys Parish, Heretaunga/Stokes Valley**  
Our Lady of Grace, Heretaunga, Friday, 10am-6pm  
Contact parish office: 0-4-972 4282
- \* **Sacred Heart Parish, Reefton**  
Contact parish office: 0-3-732 8457
- \* **Ss Mary and Joseph, Otaki/Levin**  
Fridays 11.10am before 12.10pm Mass, St Josephs Levin.
- \* **St Canice, Westport**  
After Thursday 9.30am Mass until 10.30am, in the presbytery.
- \* **St Mary of the Angels Parish, Wellington City**  
Monday-Friday, 6.45am-7.30pm / Friday, 11.00am - 12pm  
Contact parish office: 0-4-473 8074
- \* **St Francis of Assisi Parish, Ohariu**  
Contact parish office: 0-4-478 7137
- \* **St Theresa's Parish, Pimmerton**  
Monday, 10.30am-3.30pm
- \* **Star of the Sea Parish**  
St Mary's, Blenheim, Friday, 11am
- \* **Te Awakairangi Parish, Lower Hutt**  
Ss Peter & Paul, Lower Hutt  
Contact parish office: 0-4-566 3088
- \* **Catholic Parish of Wairarapa**  
St Patrick's, Masterton, Wednesday, 10-11am  
St Teresa's, Featherston, Monday-Friday, 7-8pm/Friday, 9-9.30am:  
Last Friday of month, 7pm-7am  
3rd Tuesday of month, 10.30-11am  
Contact parish office: 0-6-378 2028
- \* **Catholic Parish of Wellington South**  
St Anne's Church, Newtown, Thursday, 10.30am-1pm,  
Missionary Sisters of Charity at St Anne's Church, 4th Friday, 2.30pm  
St Francis de Sales Church, Island Bay, 1st Friday of the month, 9.30-3pm  
Contact parish office: 0-4-934 4099



## Apostolate of St Joseph

### Holy Trinity Parish, Wellington East

St Patrick's Church, Kilbirnie, 1st Wednesday of the month - evenings

Contact parish office: 0-4-388 6953

## Bible Study Group



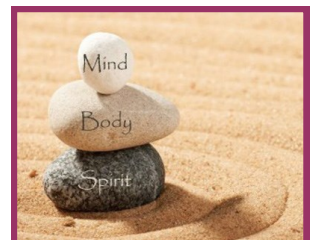
- \* **Holy Spirit (Te Wairua Tapu), Lower Hutt**  
Contact parish office: 0-4-971 7885
- \* **Catholic Parish of Wairarapa**  
St Teresa's, Featherston: Monday, 10am  
Contact parish office: 0-6-378 2018
- \* **Our Lady of Kāpiti Parish**  
Not your usual Sunday readings, Wednesday, 1.30pm  
Contact Michele Ness: 0-4-298 7378
- \* **St Joseph's Parish, Upper Hutt**  
Monday, 2pm  
Contact parish office: 0-4-528 2028
  
- \* **Ss Mary & Joseph, Otaki/Levin**  
Waitarere Scripture Study Group  
Fortnightly on Tuesdays  
Contact Bridget Taumoepeau: 021 482 178
- \* **St Gerard's Monastery, Mt Victoria**  
Emmaus Bible Study, 2nd & 4th Wednesday of the month, 11am-12.30pm  
Contact: 0-4-801 7714 or 0-4-801 7797
- \* **Holy Spirit (Te Wairua Tapu), Lower Hutt**  
Monthly prayer and song  
Contact Gerry Leech 0-4-971 1660
- \* **Star of the Sea Parish, Marlborough**  
St Mary's Blenheim (Mercy Room) Ladies Bible Study & Fellowship,  
Tuesdays 1.30-3.00pm,  
Contact Anita Fredericks 0-3-578 2787  
Sacred Heart, Kaikoura, Thursdays 1.30pm  
Contact 0-3 -319 5385

## Charismatic Prayer Groups

- \* **Cathedral of the Sacred Heart, Thorndon**  
1st, 3rd, 5th Mondays,  
Connolly Hall, Guildford Tce, 7.30pm  
Contact parish office: 0-4-496 1700
- \* **Our Lady of Kāpiti Parish,**  
Our Lady of Fatima, Waikanae,  
Monday, 1.30pm  
Contact parish office: 0-4-902 5815
- \* **St Theresa's Parish, Plimmerton**  
Wednesday, 7.30-9.30pm  
Contact Anne Dodds: 027 311 0551
  
- \* **Te Awakairangi, Lower Hutt**  
Praising & Worshipping Our Lord, 2nd &  
4th Monday, 7.30-9pm  
Contact Sandra: 0-4-564 9020 or  
[lousanray@yahoo.co.nz](mailto:lousanray@yahoo.co.nz)
- \* **Catholic Parish of Wellington South**  
St Anne's, Newtown, 4th Wednesday, 7.30pm  
Contact David Rose:  
[davidroses@hotmail.com](mailto:davidroses@hotmail.com)

## Christian Meditation Group

- \* **Holy Family Parish, Stoke/Nelson**  
St Barnabas Hall, Stoke  
Still Point Meditation  
Contact: Joy Bradley 0-3-538 0035
- \* **St Francis of Assisi Parish, Ohariu**  
St Benedict's, Khandallah, Monday, 7pm  
Contact parish office: 0-4-478 7137
- \* **Our Lady of the Bays Parish, Tasman District**  
St Peter Chanel, Motueka,  
Wednesdays, 3.30-4.30pm  
Contact: 0-3-528 4147
- \* **Our Lady of Kāpiti Parish,**  
Our Lady of Fatima, Waikanae,  
Tuesday, 4-5pm  
Contact: Eleanor Hopping 0-4-904 2525
  
- \* **Ss Mary & Joseph Parish, Otaki/Levin**  
St Mary's, Otaki, Wednesday, 4pm  
Contact: Pat Blewman 0-6-364 7555
- \* **Star of the Sea Parish, Marlborough**  
St Mary's Blenheim (Mercy Room)  
Thursdays 10.15am  
Contact parish office: 0-3-578 0038
- \* **Te Awakairangi Parish, Lower Hutt**  
St Martin de Porres, Avalon, Tuesday, 7-8pm  
Contact Tara de Souza, 0-4-912 2030
- \* **Home of Compassion, Island Bay**  
Monday evening, from 7pm  
Contact: 0-4-383 7134



## Day Aside

- \* **Holy Family Parish, Nelson/Stoke**  
St Mary's Nelson, Monthly prayer and reflection day  
Contact: Maria 0-3-548 8576

## Divine Mercy

- \* **Cathedral of the Sacred Heart, Thorndon**

Sunday, 6.30-7.00pm:  
Contact parish office: 0-4-496 1700

- \* **Holy Trinity Parish, Wellington East**

St Patrick's Kilbernie,  
Saturdays, 11.30am-12.30pm

- \* **Catholic Parish of Otari**

St Teresa's Karori, Saturday  
Contact parish office: 0-4-476 6131

- \* **Ss Mary and Joseph Parish, Otaki/Levin**

1st Sunday  
Contact David Fleming 0-6-368 1045

- \* **St Francis of Assisi Parish, Ohariu**

St Andrew's Church, Newlands  
Friday, 6.30pm (and rosary)  
Contact parish office: 0-4-478 7137

- \* **Our Lady of the Valleys Parish,  
Heretaunga/Stokes Valley**

Contact parish office: 0-4-972 4282



- \* **Te Awakairangi Parish, Lower Hutt**

Ss Peter & Paul, Sunday, 4.30pm  
St Michael's, Taita  
Contact parish office: 0-4-566 3088

- \* **Te Wairau Tapu Parish (Holy Spirit),  
Lower Hutt**

Sacred Heart, Petone  
Contact parish office: 0-4-971 7885

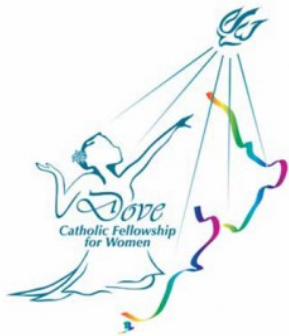
- \* **Catholic Parish of Wellington South**

St Francis de Sales, Island Bay  
Sunday, 9.15am  
St Anne's, Newtown  
Sunday, 2pm/6pm  
Contact parish office: 0-4-934 4099

- \* **St Joseph's, Upper Hutt**

Samoan Divine Mercy, Sunday, 3pm  
Contact parish office: 0-4-528 2028

## Dove Catholic Fellowship for Women



- \* **Wellington Region**

Contact Shura Price: 0-4-389 938

- \* **Holy Family Parish, Nelson/Stoke**

Contact parish office: 0-3539 1251

- \* **Our Lady of the Bays Parish, Tasman District**

Our Lady of Perpetual Help, Richmond  
Contact Mary Silcock, 0-3-541 0770

- \* **Our Lady of Kāpiti Parish**

Contact: parish office, 0-4-902 5815

- \* **Te Wairua Tapu (Holy Spirit) Parish, Lower Hutt**

Contact: parish office, 0-4-971 7885

## Faith and Light

- \* **Holy Family Parish, Nelson/Stoke**

Contact parish office: 0-3-539 1251

- \* **St Theresa's Plimmerton**

Contact: Mary & Joe Ten Broeke 0-4-233 1416

## Greenstone Doors Prayer Group

- \* **Te Awakairangi Parish, Lower Hutt**

Ss Peter & Paul, Lower Hutt  
2nd Monday, 7pm, 15 Dudley Street, Lower Hutt  
Contact parish office: 0-4-566 3088



Greenstone  
Doors

## Mens' Groups:

### Father's Prayer Group

- \* **St Gerard's Monastery, Mt Victoria**  
Every Tuesday, 10.30am  
Contact: 0-4-801 7714 or 801 7797

### Joshua Catholic Men's Fellowship

Contact Steve Ready: 0-4-970 7715



### Kāpiti Men's Group

Contact: Nick Maher 0-4-298 8475: Pat Haughey 0-4-905 4467: or  
Glen McCullough 0-4-293 1747

### Men's Life Group

- \* **Te Awakairangi Parish, Lower Hutt**  
Ss Peter & Paul, Lower Hutt  
Tuesday, 7.30pm  
Contact Marshall: 021 388 594
- \* **Our Lady of Grace, Heretaunga**  
1st Tuesday of month  
Silverstream Bowling Club  
Contact: Roger Wassom 0-4-528 7848

## Mothers' Groups:

### Circle of Friendship (Ladies gathering)

- \* **Our Lady of the Valleys, Heretaunga/Stokes Valley**  
Contact parish office: 0-4-972 4282

### Marian Mothers' Group



- \* **St Francis of Assisi Parish, Ohariu**  
St Andrew's Church, Newlands  
Contact parish office: 0-4-478 7137
- \* **Our Lady of Hope Parish, Tawa/Titahi Bay**  
2nd Monday (morning)  
Contact Mary Rayner: 0-4-232 2088
- \* **Te Awakairangi Parish, Lower Hutt**  
Ss Peter & Paul, Lower Hutt  
Contact parish office: 0-4-566 3088
- \* **St Joseph's Parish, Upper Hutt**  
Convent, 17 Gibbons St, Upper Hutt  
Tuesday, 1.30pm,  
Contact parish office: 0-4-528 2028

### Mothers' Prayer Groups

- \* **Our Lady of the Bays Parish, Tasman District**  
Our Lady of Perpetual Help, Richmond  
Contact parish office: 0-3-544 8987
- \* **Our Lady of the Valleys Parish, Heretaunga/Stokes Valley**  
Tuesday prayer group  
Contact parish office: 0-4-972 4282
- \* **Ss Mary and Joseph Parish, Otaki/Levin**  
St Mary's, Otaki  
2nd Tuesday, 11am  
Contact parish office: 0-6-378 2028  
St Joseph's, Levin, 2nd Tuesday  
Contact Glenice Hoskins: 0-6-368 7223



(continued over)



## Mothers' Prayer Groups (continued)

- \* **Catholic Parish of Wellington South**  
St Francis de Sales Church, Island Bay  
Thursday, 10am  
Contact parish office: 0-4-934 4099
- \* **St Gerard's Monastery, Mt Victoria**  
Every Tuesday, 10.30am  
Contact: 0-4-801 7714 or 801 779

## Old Ducks Women's Prayer and Scripture Group

- \* **Our Lady of Kāpiti Parish**  
Tuesday, 10-11am  
Contact Chris Todd: 0-4-298 8984

## Women of Faith

- \* **Our Lady of Hope Parish, Tawa/Titahi Bay**  
2nd Tuesday, 7.30pm  
Contact Catherine: 0-4-027 431 7686

## Prayer Groups / Chains

- \* **Christian Life Community—Ignatian Spirituality** (Wellington region)  
Contact: Sarah Dench: 0-4-383 7134 [sarahdench@yahoo.com](mailto:sarahdench@yahoo.com)
- \* **St Francis of Assisi Parish, Ohariu**  
Prayer chain  
Contact parish office: 0-4-478 7137
- \* **Catholic Parish of Wairarapa**  
St Patrick's Masterton,  
prayer and discussion group, Fridays 9.30am  
St Mary's, Carterton, Friday morning  
St Teresa's, Featherston, Friday morning  
Contact parish office: 0-6-378 2028
- \* **Holy Family Parish, Nelson**  
St Mary's, Nelson, Monday prayer group, 2.00pm  
Contact Giannina: 0-3-545 9243
- \* **Holy Trinity Parish, Wellington East**  
Parish prayer, Monday 7.00am  
Contact Dave Monastra: 027 447 7280  
Prayer chain  
Contact parish office: 0-4-388 6953
- \* **Our Lady of the Valleys, Heretaunga/Stokes Valley**  
Our Lady of Grace Church, Heretaunga, Monday Prayer Group  
Contact parish office: 0-4-972 282
- \* **Te Awakairangi Parish, Hutt Valley**  
3rd Order Carmelite Prayer Group  
St Martin de Porres Church, Avalon  
Contact parish office: 0-4-566 3088
- \* **Our Lady's Home of Compassion, Island Bay**  
Quiet Days with Suzanne Aubert  
Second Thursday of the month – 10am to 2pm  
Contact: 0-4-383 7769
- \* **St Gerard's Monastery, Mt Victoria**  
Worship Night, last Friday of the month, 7.30pm  
Contact: 0-4-801 7714 or 0-4-801 7797



- \* **Ss Mary and Joseph, Otaki/Levin**  
Prayer and Discussion Group  
Following Francis in Faith'  
Fortnightly on Wednesdays.  
Parish Centre, St Josephs Levin  
Contact: Bridget Taumoepeau  
021 482 178

## Rosary

- \* **Cathedral of the Sacred Heart, Thorndon**  
Monday, 11.30am  
Contact parish office: 0-4-496 1700
- \* **Holy Spirit Parish (Te Wairua Tapu), Lower Hutt**  
St Patrick's, Wainuiomata, Wednesday, 7.30pm  
San Antonio, Eastbourne, Friday, 9.10am  
Contact: parish office, 0-4-971 7885
- \* **Holy Trinity Parish, Wellington East**  
St Anthony's, Seatoun,  
Tuesday, Wednesday, Thursday before 9am Mass  
Contact parish office: 0-4-388 6953
- \* **Sacred Heart Parish, Reefton**  
Contact parish office: 0-3-732 8457
- \* **St Mary of the Angels, Wellington Central**  
Monday-Thursday, 11.30am: Friday, following 12pm Mass
- \* **St Theresa's Parish, Plimmerton**  
Following Adoration, 2nd and 4th Thursday  
Contact Francenne Smith: 0-4-238 2966
- \* **Star of the Sea Parish, Marlborough**  
St Mary's, Blenheim  
Wednesdays, 5.30pm, Contact: Margaret 0-3-578 2707  
Saturdays after 9.30am Mass  
Sacred Heart, Kaikoura  
Wednesdays, 7pm
- \* **Te Awakairangi Parish, Lower Hutt**  
Ss Peter and Paul, Lower Hutt, Monday, 1.30pm  
Contact parish office: 0-4-566 3088
- \* **St Joseph's Parish, Upper Hutt**  
Saturday, 7pm (after Vigil Mass)  
Contact parish office: 0-4-528 2028



## Taizé Prayer

- \* **Holy Family Parish, Nelson district**  
St Francis of Assisi, Stoke  
Contact Diane Renwick: 0-3-547 3356
- \* **Our Lady's Home of Compassion, Island Bay**  
First Friday of the month in the Chapel, 7pm to 8pm

Contact: 0-4-383 7769

## Young Church

- \* **St Mary of the Angels, Wellington City**  
**Young Adults Adoration**, 1st Thursday, 6pm  
Contact parish office: 0-4-473 8074
- \* **Catholic Parish of Wellington South**  
St Anne's Church, Newtown,  
**Lifeteen**, Sunday, starts with 5pm Mass  
<https://www.facebook.com/search/top/?q=life%20teen%20wellington>  
**XLT**, 2nd Friday, 7pm  
<https://www.facebook.com/xltwellington/>
- \* **Holy Family Parish, Porirua**  
Youth Group, Mondays 6-8pm.  
Contact Sr Hannah, Missionaries of Charity: 0-4-235 5373



(continued over)

## **Young Church** (continued)

- \* **Our Lady of Hope Parish, Tawa/Titahi Bay**  
**Xavier Youth**, 9-13 yrs, Fridays 8-10pm  
Contact Paul McArdle 027 304 0712
- \* **Our Lady of Kapiti**  
Youth Groups for 5+; 5-7 yrs; 8-13 yrs;  
Contact Jacqui McLaughlin: 022 675 7357 or [kapiti.youth@gmail.com](mailto:kapiti.youth@gmail.com)
- \* **St Joseph's Parish, Upper Hutt**  
Youth Group, 7pm Friday  
Contact parish office: 0-4-528 2028
- \* **Star of the Sea Parish, Marlborough**  
**Young Adults Discussion Group**, meets fortnightly  
Contact Maurice: 027 444 5506
- \* **Te Awakairangi Parish, Lower Hutt**  
Taita Youth Group, Fridays, 6.30-8.30pm  
Contact Maryanne Pereira 021 107 7248 or [mary.pereira@hotmail.co.nz](mailto:mary.pereira@hotmail.co.nz)
- \* **Focolare Movement**  
**Young Adults**, Hub of Victoria University, Mondays, 6pm  
Contact: Philip Wakelin 022 622 0174 or Miriam Vender 021 143 9855
- \* **St Gerard's Monastery, Mt Victoria**  
**ICPE Young Adults Ministry**, 1st, 2nd and 3rd Wednesday of month, 7.30pm  
Contact: 0-4-801 7714 or 0-4-801 7797